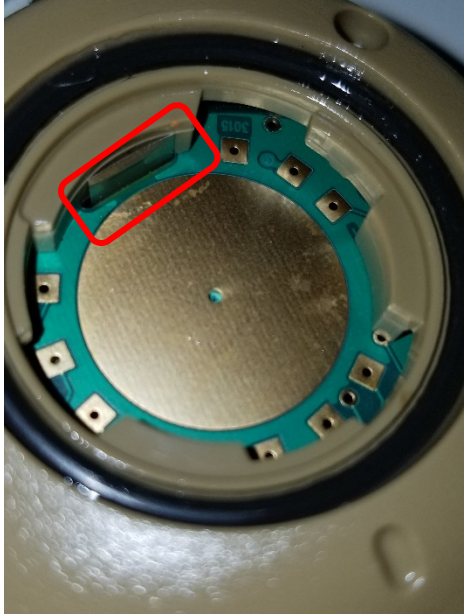
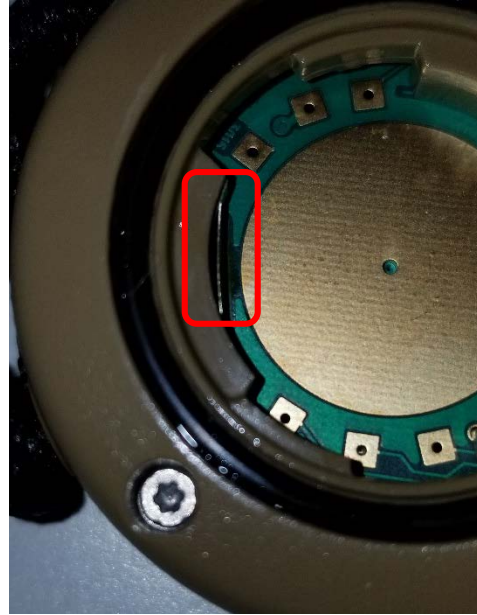


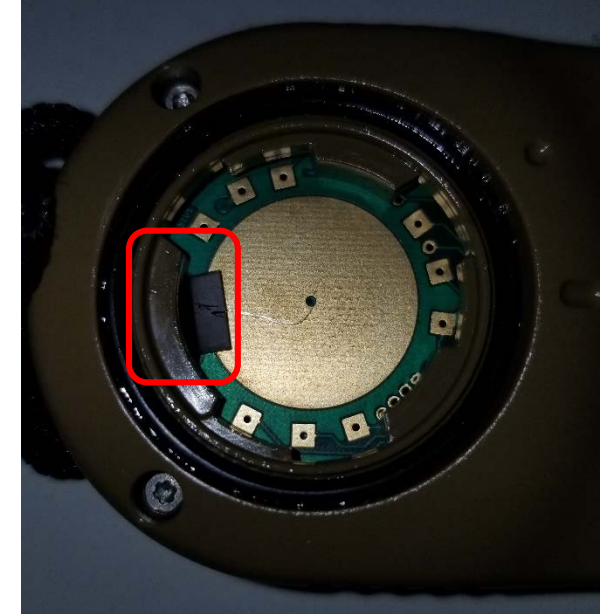
Why isn't my Kestrel 2700 powering up after I changed the battery?



1) Locate the battery clip inside the battery cavity. It looks like a rectangular piece of silver metal that should be perpendicular to the board below and up against the plastic post behind it.



2) The side of the battery needs to make contact with this battery clip as shown above.



3) If the clip was pushed down so it is flat against the board below (see above), the battery will sit on top of the clip and not work. Gently use tweezers to push the battery clip back into position so the side of the battery can make contact again. Or send it in to us for repair.