

## **How to update the Kestrel 4500 firmware using the NK Bootloader Program**

IF YOUR UNIT'S SERIAL NUMBER IS BELOW 686705 YOU CANNOT UPGRADE YOUR FIRMWARE REMOTELY. PLEASE CONTACT NIELSEN KELLERMAN FOR MORE INFORMATION ([techsupport@nkhome.com](mailto:techsupport@nkhome.com))

***Warning: You will lose any information saved on the Kestrel when performing this procedure.***

First you must ensure that your Kestrel 4500 can connect to a Windows based computer. If your unit does not have Bluetooth capabilities, you will need to purchase the PC Interface Cradle. The USB version can be purchased [here](#)

Go to <http://www.nkhome.com/support/kestrel-support/manuals-and-downloads> and download either:

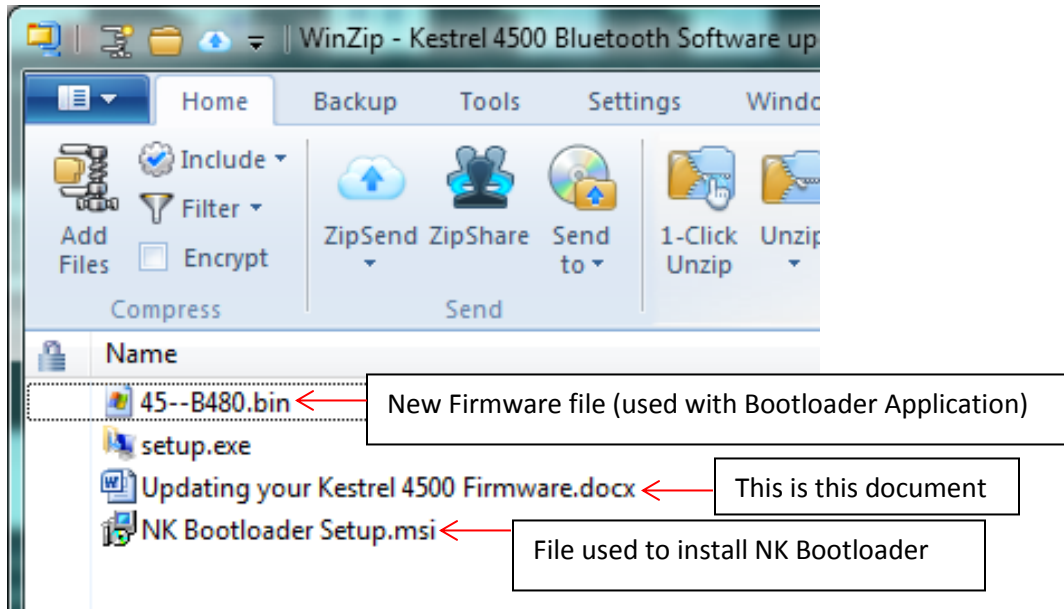
For Bluetooth devices: Kestrel 4500 Bluetooth Software update (4\_80).zip

For Non-Bluetooth devices: Kestrel 4500 Non-Bluetooth Software update (4\_80).zip

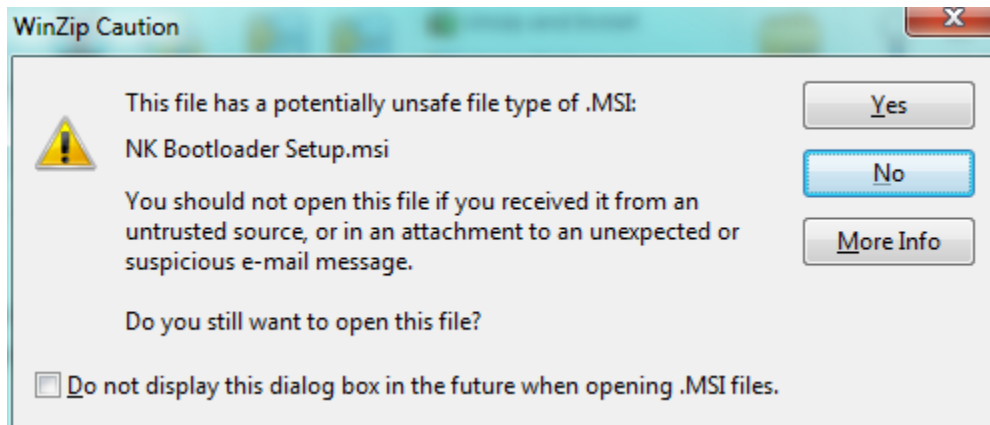
*NOTE: Pick the file that matches your actual unit configuration, not how you typically connect to the computer (i.e., If you have a Bluetooth unit but connect via an Interface Cradle, please select the BLUETOOTH version).*

Please save the file to a location that you can easily access. Desktop is a good location for many to easily access. Once the file is saved, you will have to unzip it. Unzip it to a folder that is in the same location to keep things simple.

The following shows the files and quick descriptions for the Bluetooth version. The Non-Bluetooth version will have 45---480.bin instead of the shown file.



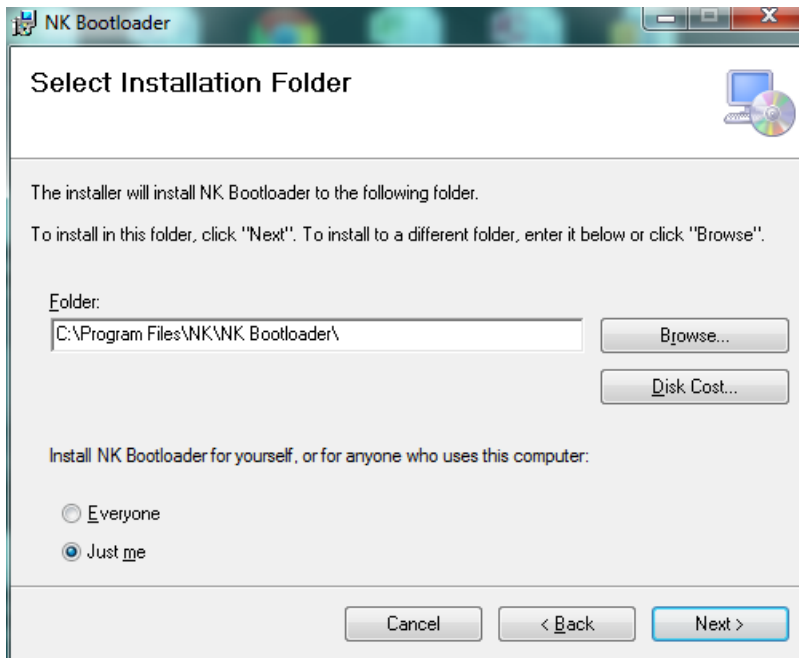
After you have unzipped the file, double click on NK Bootloader Setup.msi to begin installing the Bootloader application.



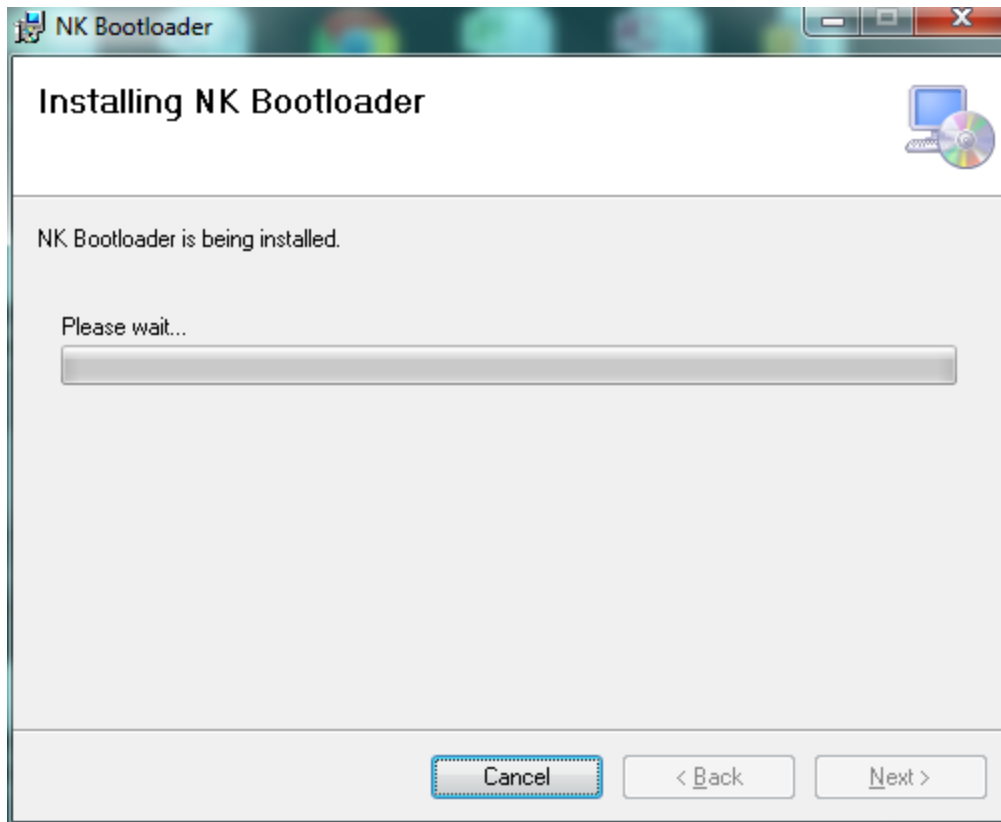
This caution will appear, click Yes to start the install.



Click Next when the Wizard pops up.



You can choose the default location and select Next, then Next again.

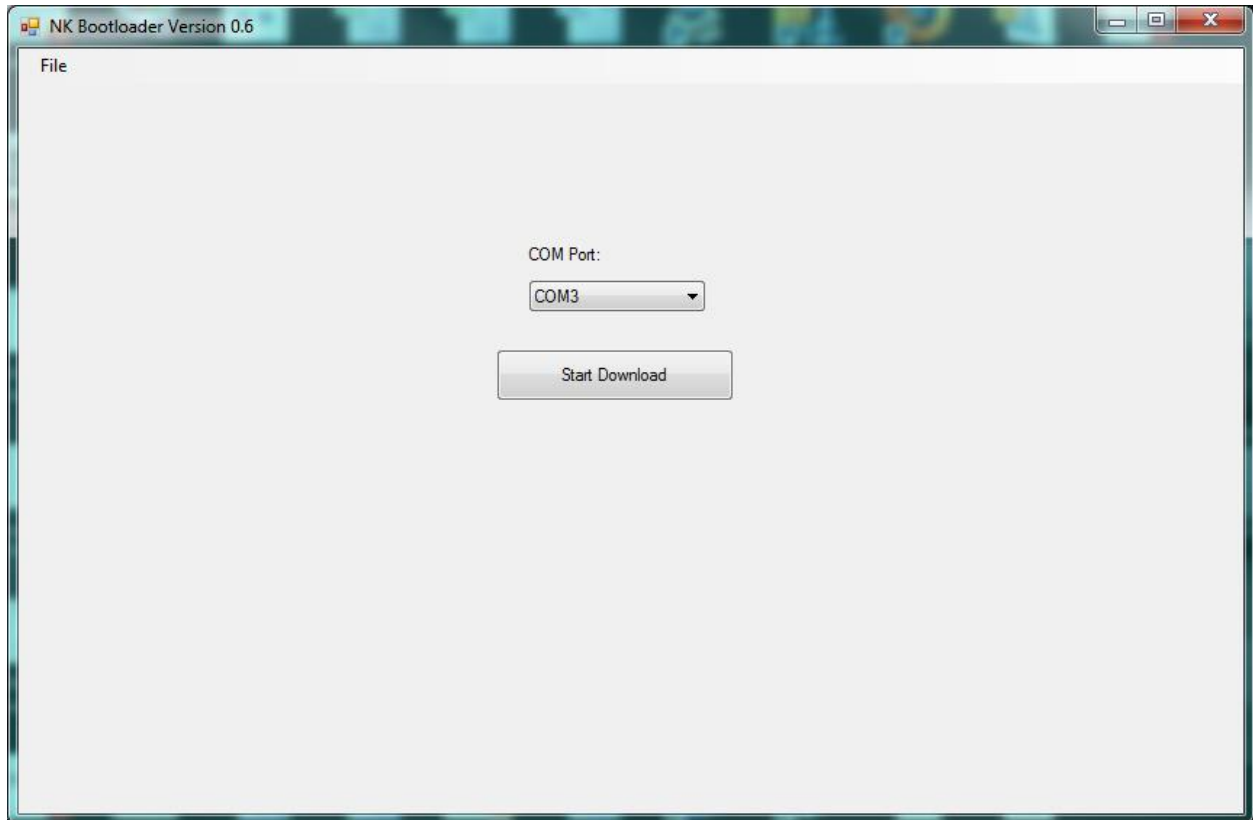


The Bootloader will be installed on your computer. When finished hit Close.



The application should appear on your task bar. Click on it to start the Bootloader application. If not, please locate the application file in the default directory below, unless you changed it in the previous steps:

(C:\Program Files\NK\NK Bootloader\NK Booloader.exe)

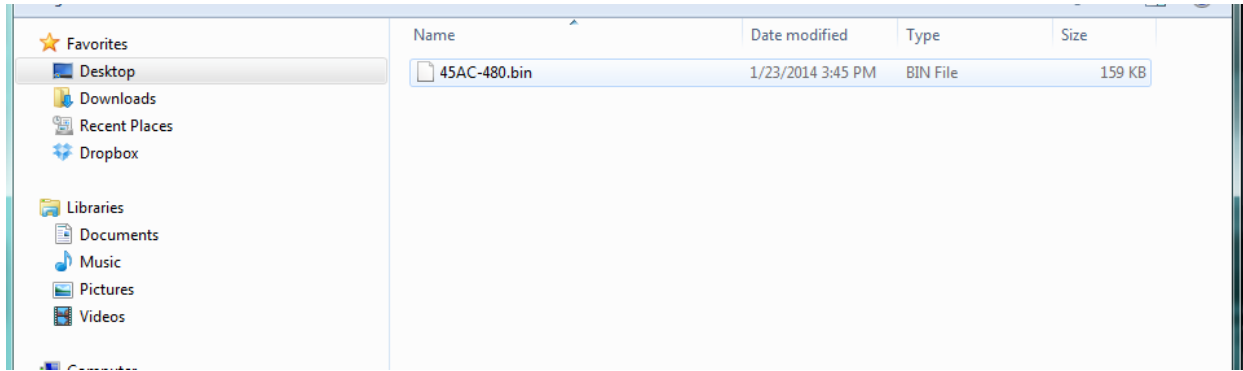


First make sure your Kestrel is connected to the computer and turned on. If you are using Bluetooth, please ensure Bluetooth is enabled on the Kestrel.

Please select the COM port number that you are connected to with your Kestrel (*Please note: the software does not automatically detect the correct port*).

If you do not know the COM port number, you can usually find this information in Control Panel->Device Manager->Ports (COM & LPT).

Next select the File tab in the top left corner and select Open Bin File.



Navigate to the directory where we saved all the information initially (Desktop was the suggestion) and select the appropriate .bin file and hit Open.

Now you are ready to update your Kestrel's firmware. Select **START DOWNLOAD** to begin the procedure.

You will see a green bar on the computer progress across the screen. You will also see the words "**REFLASH**" displayed on the Kestrel if working properly.

Once the green bar is completed and the Kestrel no longer says "REFLASH", the code update is complete.

You can close out the application and begin using your Kestrel with the updated code.

If you have any questions, please call (610) 447-1555 or email [techsupport@nkhomes.com](mailto:techsupport@nkhomes.com)