

Upgrading Your Kestrel Shooter's Weather Meter with Applied Ballistics to Version 4.85

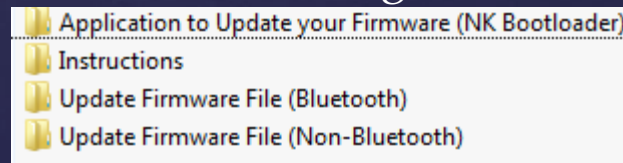
What are the benefits of upgrading to firmware version 4.85?

- Update fixes issue with the Kestrel locking up and several of the compass issues seen.
- Symptoms this update should correct:
 - Kestrel locks up in the ON position. May have an hourglass shown or might not be able to navigate.
 - Kestrel locks up in the OFF position. Prevents the need to pop the batteries to restart the unit.
 - Saves users hassle of recalibrating compass because batteries no longer need to be popped.
 - Overall issues with compass features including Direction of Fire, Wind Capture, etc.



Upgrading Your Kestrel to Version 4.85

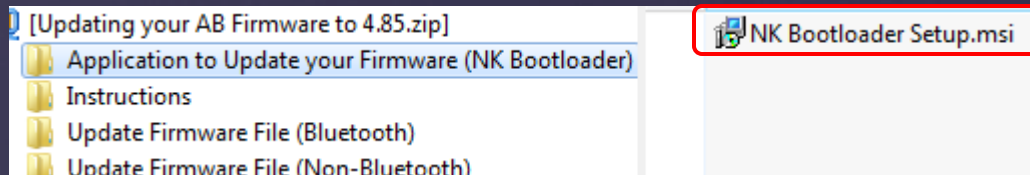
- Please note that you will need access to a Windows machine to upgrade.
 - If you do not have a Windows machine contact techsupport@nkhome.com for upgrade options.
- Please **save your guns** to your computer prior to any upgrade. You should not lose your guns with the upgrade, but this is good practice in remote event something goes wrong.
- Go to <http://www.nkhome.com/support/kestrel-support/manuals-and-downloads>
- Download the ZIP file that your desktop* :
 - Updating your AB Firmware to 4.85.zip
- Unzip the contents of the ZIP file to your desktop* after downloading.
- You should now have the following folders on your desktop:



* Note: Location does not need to be desktop but please make sure you know how to locate the files once downloaded and unzipped.

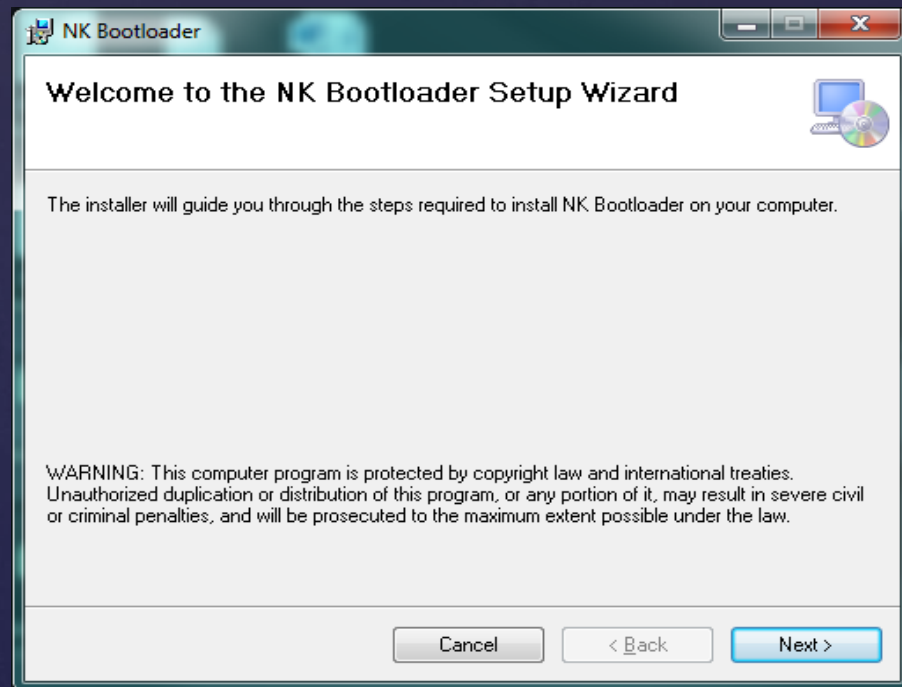
Installing the NK Bootloader Application

- Open the *Application to Update your Firmware (NK Bootloader)* folder (contents shown below):



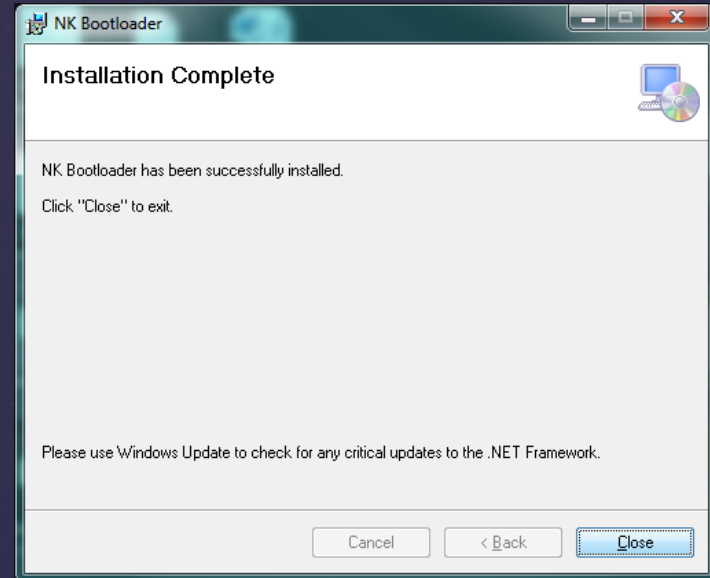
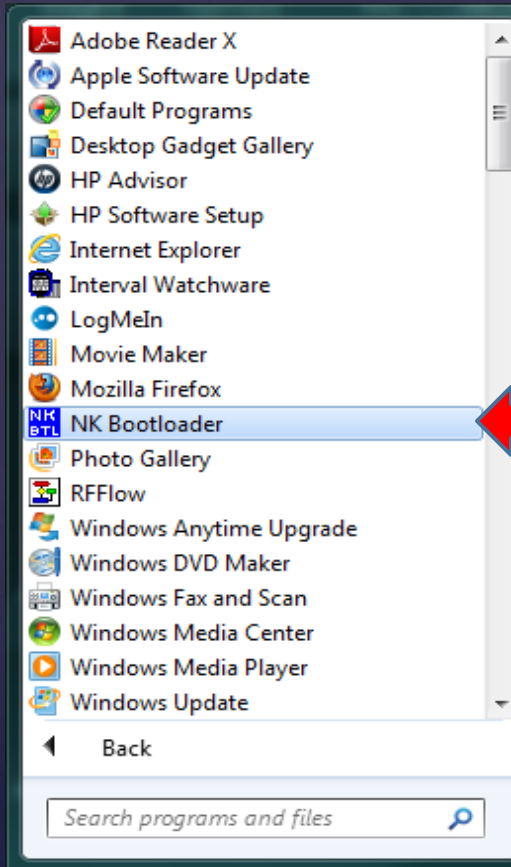
- Click on NK Bootloader Setup shown above to begin installation.

- Follow the instructions for the Setup Wizard to install.
- Again, **note the file path to where installation is occurring.**



Installing the NK Bootloader Application (continued)

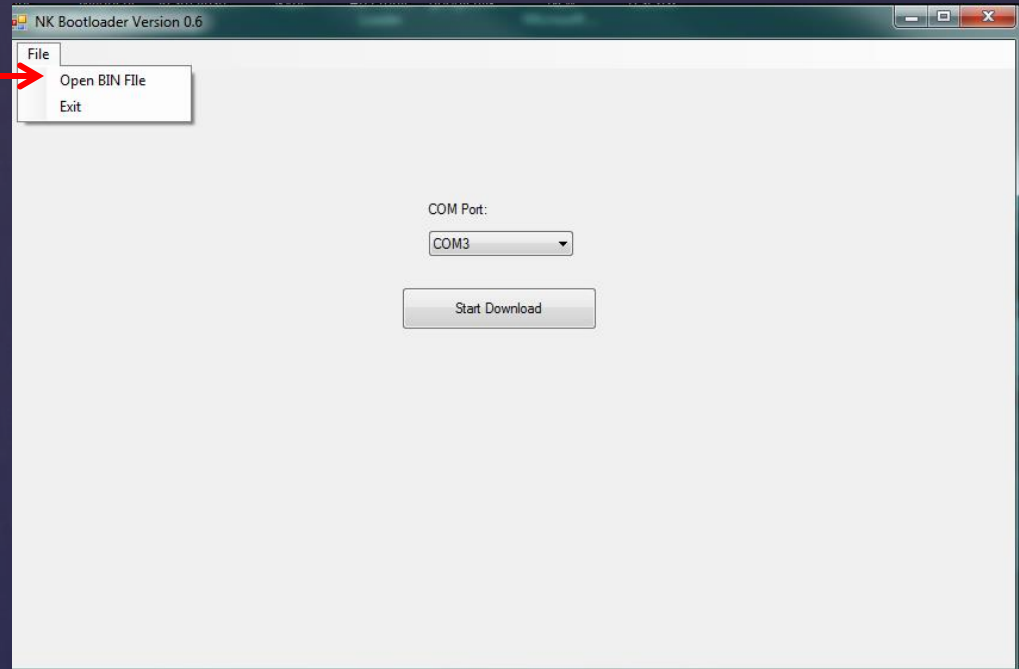
- Once Installation is complete, click on the Windows Start button (or go to the appropriate folder) and run the NK Bootloader software.



Example of
NK Bootloader program icon

Using the NK Bootloader Application

- Click on the File Tab in the top right, Then click on Open BIN File.
- Navigate to the folder on the desktop entitled **Update Firmware File.**
- Please select the file for your model version below.



 Update Firmware File (Bluetooth)

45ACB485.bin (For Bluetooth Model Kestrels)

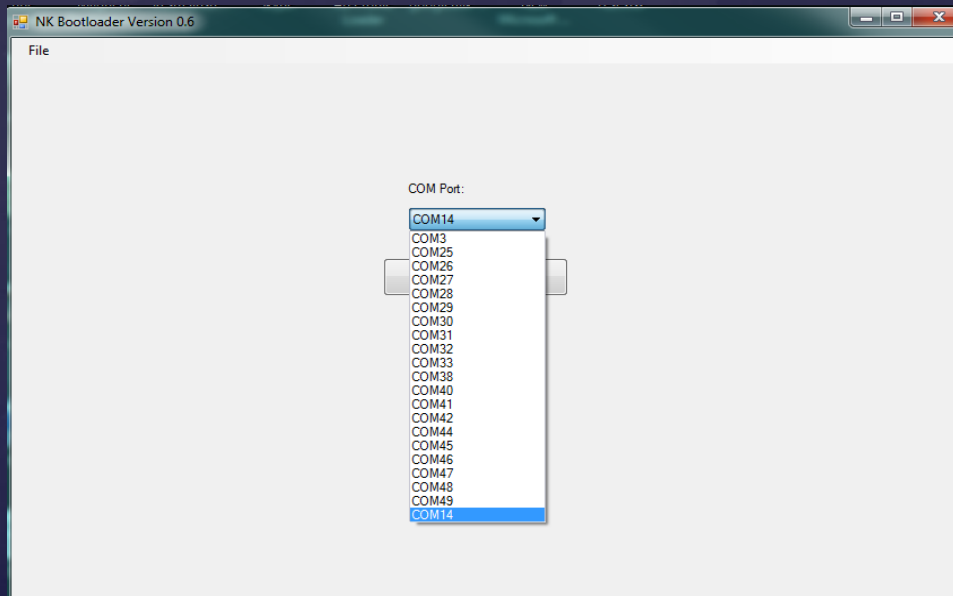
 Update Firmware File (Non-Bluetooth)

45AC-485.bin (For Non-Bluetooth Model Kestrels)

NOTE: Select the version you have, not the method you are connecting. For example choose Bluetooth file if connecting a Bluetooth model via the PC Cradle.

Using the NK Bootloader Application (continued)

- Make sure your Bluetooth is enabled on the Kestrel unit and powered on. If you are using the PC Interface cradle, please have the Kestrel unit powered on and in the cradle which should be connected to the PC. Note if using a Bluetooth module in the cradle, please turn Bluetooth OFF on the Kestrel.
- Select the correct COM port number (see Troubleshooting) and click start download. It will take about 10 to 15 minutes to update the Kestrel Software. You should see “REFLASH” on the Kestrel unit while updating the code.



Using the NK Bootloader Application (continued)

- Once the progress bar completes, you should see Download Successful.
- **Please wait until the Kestrel reboots** itself before disconnecting or closing the program to ensure firmware update complete.
- You can now use your Kestrel with the updated 4.85 software version.
- You can also go to the Google Play App Store for [Kestrel Companion](#).

Troubleshooting

- Additional information can be found [here](#)
- Please ensure that your PC has Bluetooth capability, and your unit is paired and PIN entered (If using Bluetooth).
- Please ensure that you are selecting the correct COM port number.
 - (For PC Cradle) This can be found through Control Panel->Devices and Printers.
 - (For Bluetooth) This can be found in Bluetooth->Open Settings->COM Ports.
- If using the PC Interface Cradle, please ensure you have the latest driver (under Software Drivers at the above link).
- If the update is interrupted, and your Kestrel stays on REFLASH:
 - Pop the batteries and reinsert.
 - **Display will not come back on but unit can still be updated.**
 - Connect in the exact same manner as before and rerun the update steps with the display off.
 - Unit should reboot after the update finishes with the latest firmware.
- Further help can be obtained by emailing techsupport@nkhome.com or calling 1-800-784-4221