

How to Update your Kestrel Firmware using LiNK for Windows

NOTE: You will need either our [Bluetooth Dongle](#) or the [USB Transfer Cable](#) to perform this update. If you do not have either of these, consider using the Kestrel LiNK or Kestrel LiNK Ballistics mobile applications.


For the latest firmware revisions, please see [here](#)

Step 1: Download and install the latest Kestrel LiNK for Windows program found here:
<https://kestrelinstruments.com/mwdownloads/download/link/id/84/>

Step 2: Insert the Bluetooth dongle or USB Transfer cable into the computer. Connect the cable to the Kestrel.

On the Kestrel Main Menu:

If using Bluetooth

Bluetooth...	On		Conct	PC/Mobile
Data Port	Off		Status	Available
Memory Options...			Privacy Pin	Off
			PIN	1234

Make sure Bluetooth is ON. Highlight Bluetooth and press the center button. Make sure Conct is set to PC/Mobile and Privacy Pin is OFF.

Use the left or right arrow to change these values if not set correctly.

If using USB Cable

Bluetooth...	Off
Data Port	On
Memory Options...	

Make sure Data Port is set to On

Step 3: Open the Kestrel LiNK for Windows Program

Step 4: You have to make sure your computer has the latest firmware. Click on the Help tab at the top followed by Update Your Kestrel.

Kestrel LiNK™

About Options Help

To connect wirelessly to your Kestrel unit and Kestrel Link:

- In Kestrel menu, turn **Bluetooth** to **On** and set **Connect to PC/Mobile**
- Ensure Kestrel LiNK Wireless dongle is inserted in USB port
- Ensure Kestrel unit is in range of the computer

To connect via USB Data Transfer Cable (requires USB Data Transfer Cable)

- In Kestrel menu, turn **Data Port** to **On**
- Connect USB Data Transfer Cable to rear of Kestrel and USB Port

Once desired device is displayed, click on it to connect.

Searching for Kestrels...

ELITE - 2273515 (Wireless)

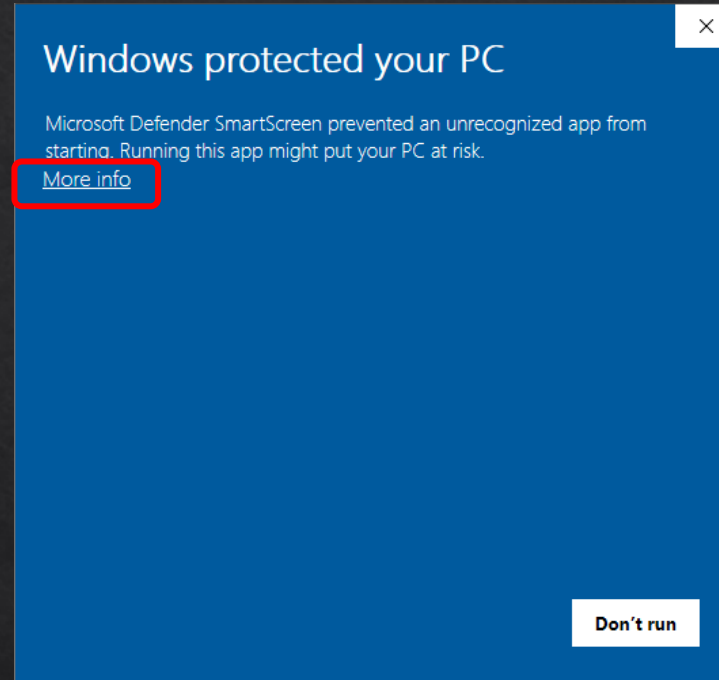
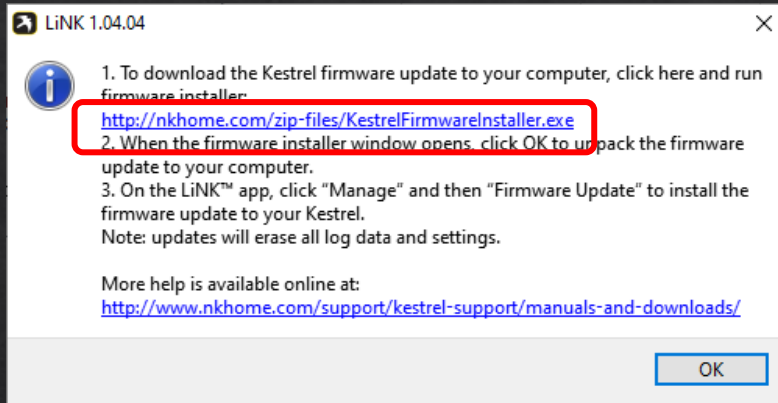
Restart Scan Manage

Connected to dongle
Searching for cables...

Device	Model	Start Time	End Time	Datasets
WEATHER - 2273515	5500L	2020-06-22 10:01:18	2020-06-22 12:45:02	462
5400AG Weatherm...	5400AGCL	2020-06-08 10:10:46	2020-06-08 11:21:56	10
BRHS Kestrel Moni...	5400CL	2020-01-01 00:11:01	2020-08-28 12:30:00	803
BRHS Kestrel Moni...	5400CL	2020-08-28 12:45:25	2020-08-28 14:27:50	1230
BRHS Kestrel Moni...	5400CL	2020-08-28 14:45:00	2020-09-04 14:00:00	10039

Delete Export

Step 5: Click on the link in Step one to download the firmware executable. Once downloaded, click on it to run the firmware update program. Follow the prompts to install the firmware.



Note: If you get this pop up, click on More Info and then Run Anyway



Step 6: Now we can connect the Kestrel to the program. Find your unit in the window on the left and select it to connect.

Then click on the Manage Tab.

The screenshot shows the Kestrel LiNK software interface. On the left, there are instructions for connecting wirelessly and via USB. Below these instructions is a list of connected devices, with 'LITE - 2273515 (Wireless)' selected. An orange arrow labeled '1' points to this device. Below the list are 'Disconnect' and 'Manage' buttons, with an orange arrow labeled '2' pointing to the 'Manage' button. On the right, there is a table with columns for Device, Model, Start Time, End Time, and Datasets. At the bottom of the interface are 'Delete' and 'Export' buttons.

To connect wirelessly (requires LiNK enabled Kestrel 5 Series unit and Kestrel LiNK Wireless Dongle)

- In Kestrel menu, turn **Bluetooth** to **On** and set **Conct to PC/Mobile**
- Ensure Kestrel LiNK Wireless dongle is inserted in USB port
- Ensure Kestrel unit is in range of the computer

To connect via USB Data Transfer Cable (requires USB Data Transfer Cable)

- In Kestrel menu, turn **Data Port** to **On**
- Connect USB Data Transfer Cable to rear of Kestrel and USB Port

Once desired device is displayed, click on it to connect.

Connected!

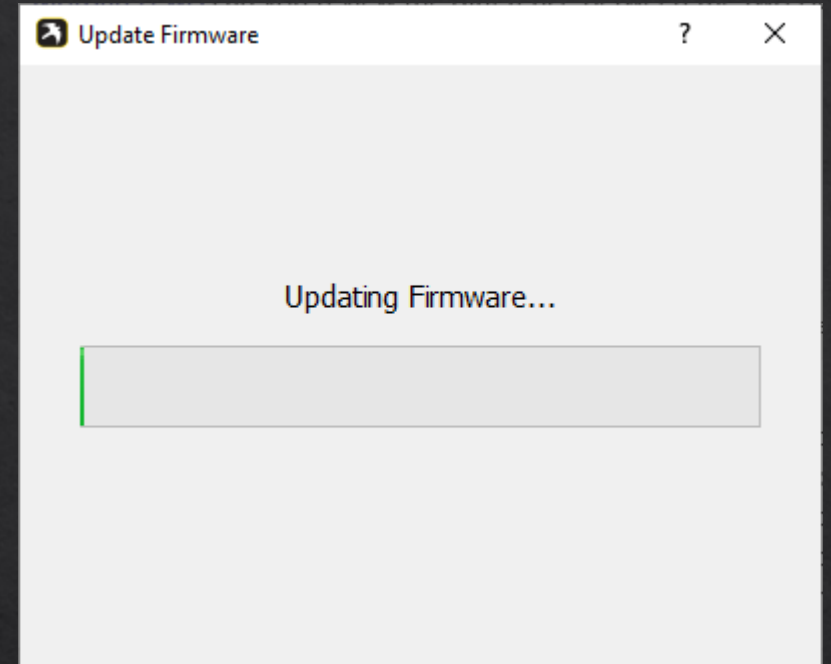
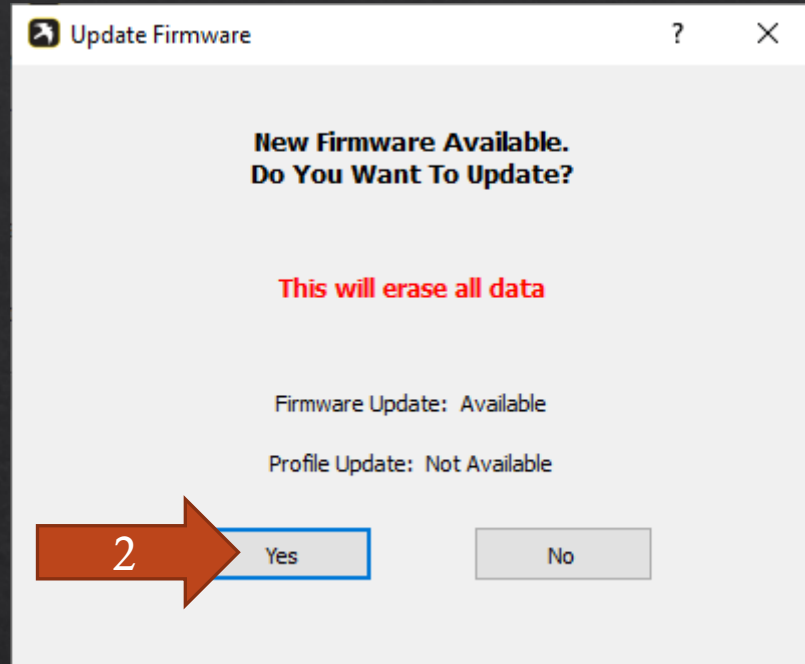
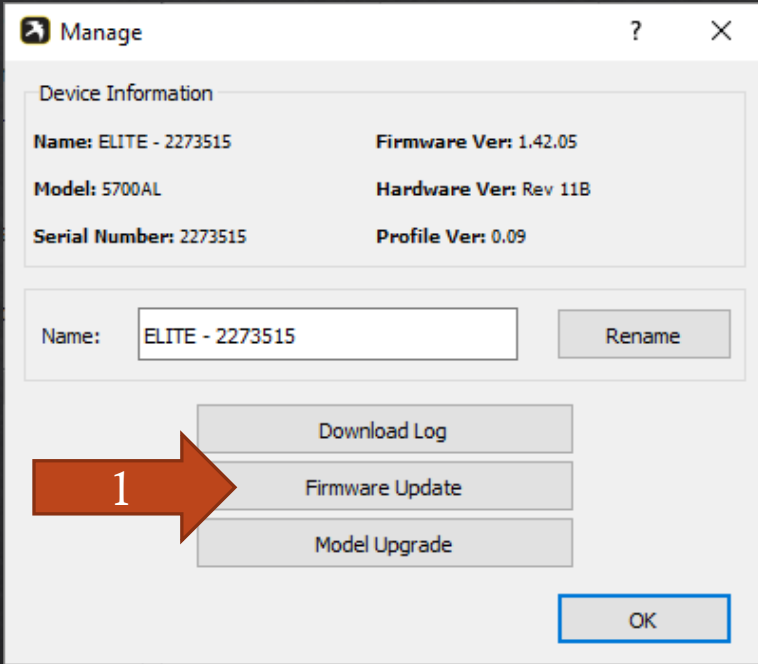
LITE - 2273515 (Wireless)

Disconnect Manage

Connected to dongle
Searching for cables...

Device	Model	Start Time	End Time	Datasets
WEATHER - 2273515	5500L	2020-06-22 10:01:18	2020-06-22 12:45:02	462
5400AG Weatherm...	5400AGCL	2020-06-08 10:10:46	2020-06-08 11:21:56	10
BRHS Kestrel Moni...	5400CL	2020-01-01 00:11:01	2020-08-28 12:30:00	803
BRHS Kestrel Moni...	5400CL	2020-08-28 12:45:25	2020-08-28 14:27:50	1230
BRHS Kestrel Moni...	5400CL	2020-08-28 14:45:00	2020-09-04 14:00:00	10039

Delete Export



Step 7: Click on Firmware Update. You will be prompted that a new update is available. Click on Yes to start the update.

Note: If you have a Ballistics unit and haven't saved your profiles off the Kestrel, it is advisable to transfer or save your profiles prior to doing the update.

Once the update has finished, the Kestrel will turn off and back on. Once it turns back on, you should have the latest firmware on your device.

Note: If a BLE profile update is needed, you will have to run through these steps a second time.

Troubleshooting

If your computer isn't recognizing the Bluetooth dongle, try another USB slot. If it is still not recognizing the dongle (i.e., shows Searching for Dongle), then please review this help:

<https://kestrelinstruments.com/mwdownloads/download/link/id/58/>

If your USB Cable isn't working correctly, make sure the cable is plugged into the computer and into the Kestrel PRIOR to opening the Kestrel LiNK program.

If you are still having issues, we can answer them at techsupport@nkhome.com