

Upgrading Your Kestrel 4500 to Version 4.93

What are the benefits of upgrading to firmware version 4.93?

- There are no specific changes to the 4500 with version 4.93
-

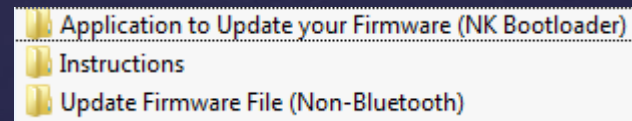
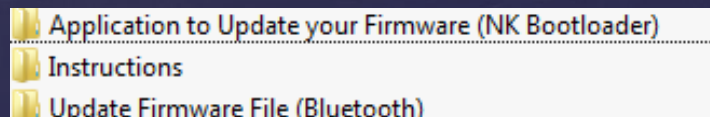
How do I know which firmware I have on my unit?

- When you turn on the Kestrel, pay attention to the start-up screen. The firmware will be by the battery percentage in the form of “Iss 4.xx”. This is your firmware version.
- For Example:
This unit has firmware version 4.91



Upgrading Your Kestrel to Version 4.93

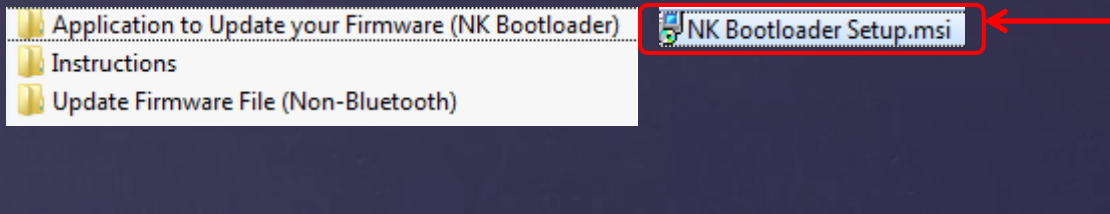
- Please note that you will need access to a Windows machine to upgrade.
 - If you do not have a Windows machine contact techsupport@nkhome.com for upgrade options.
- Go to <http://www.nkhome.com/support/kestrel-support/manuals-and-downloads>
- Download the ZIP file that your desktop* :
 - Updating your Kestrel 4500 firmware to 4.93 – Bluetooth.zip or
 - Updating your Kestrel 4500 firmware to 4.93 – Non Bluetooth.zip
- Unzip the contents of the ZIP file to your desktop* after downloading.
- You should now have one of the following folders on your desktop:



** Note: Location does not need to be desktop but please make sure you know how to locate the files once downloaded and unzipped.*

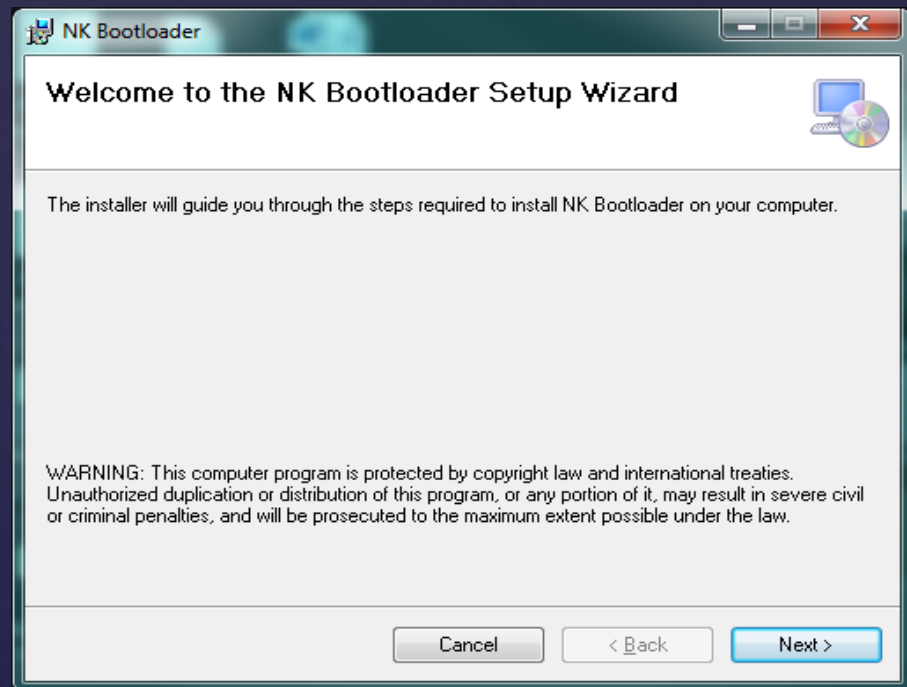
Installing the NK Bootloader Application

- Open the *Application to Update your Firmware (NK Bootloader)* folder (contents shown below):



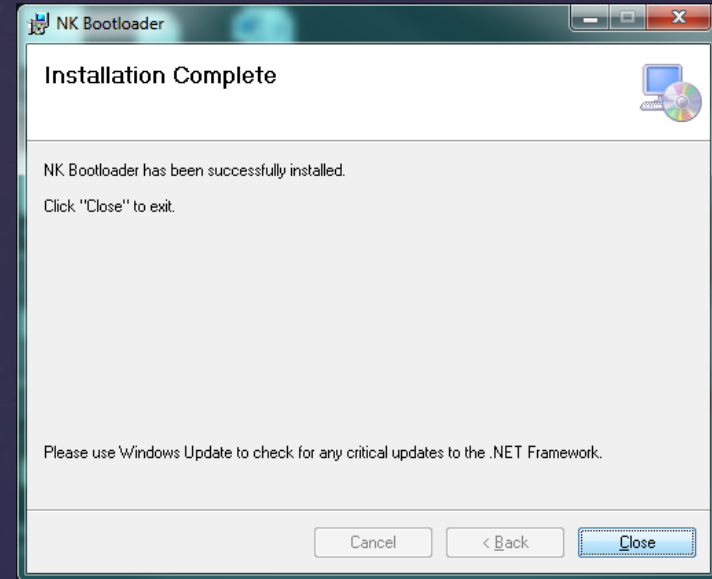
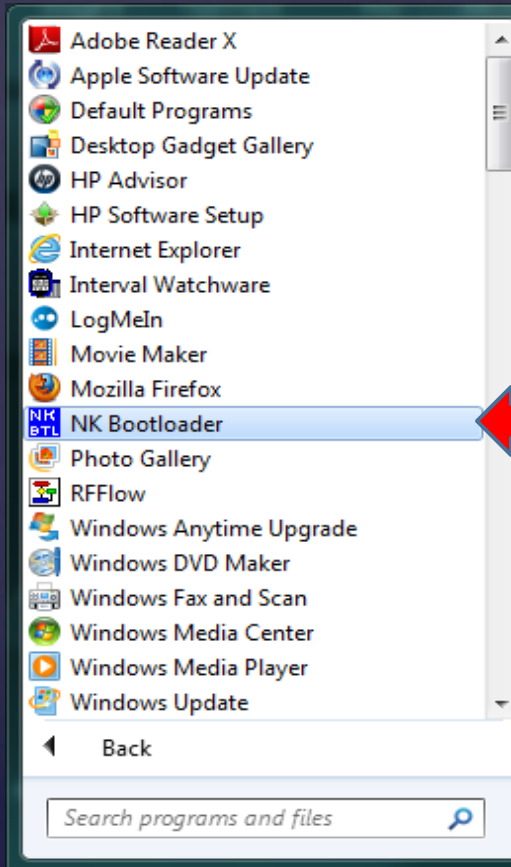
- Click on NK Bootloader Setup shown above to begin installation.

- Follow the instructions for the Setup Wizard to install.
- Again, **note the file path to where installation is occurring.**



Installing the NK Bootloader Application (continued)

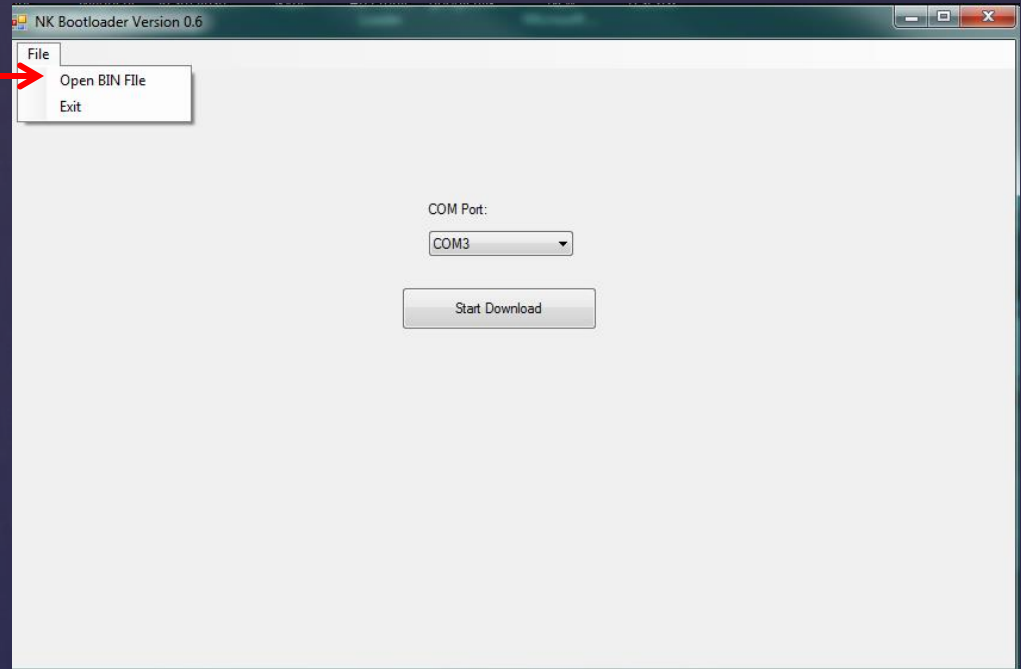
- Once Installation is complete, click on the Windows Start button (or go to the appropriate folder) and run the NK Bootloader software.



Example of
NK Bootloader program icon

Using the NK Bootloader Application

- Click on the File Tab in the top right, Then click on Open BIN File.
- Navigate to the folder on the desktop entitled **Update Firmware File**.
- Please select the file for your model version below.



Update Firmware File (Bluetooth)

45--B493.bin (For Bluetooth Model Kestrels)



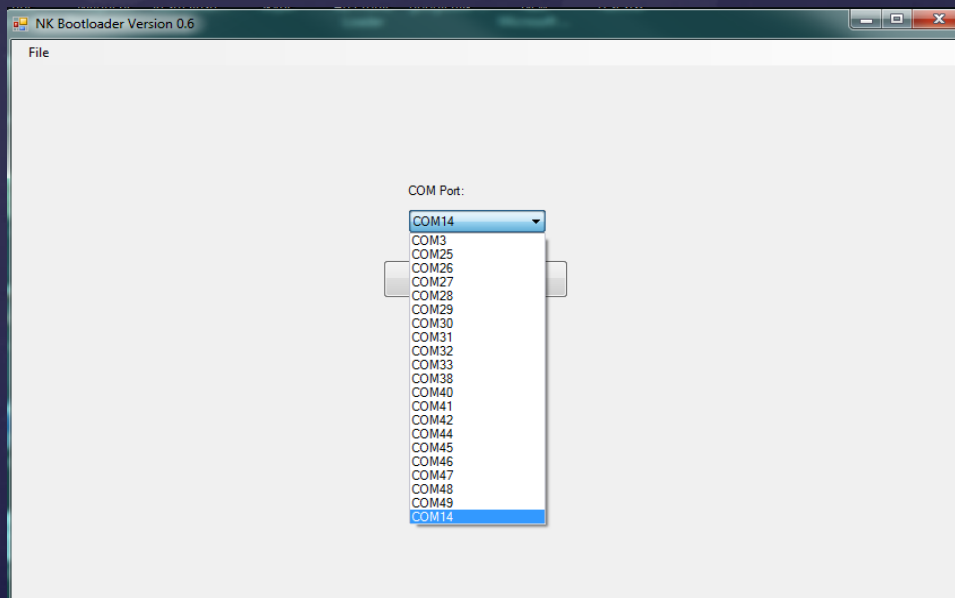
Update Firmware File (Non-Bluetooth)

45---493.bin (For Non-Bluetooth Model Kestrels)

NOTE: Select the version you have, not the method you are connecting. For example choose Bluetooth file if connecting a Bluetooth model via the PC Cradle.

Using the NK Bootloader Application (continued)

- Make sure your Bluetooth is enabled on the Kestrel unit and powered on. If you are using the PC Interface cradle, please have the Kestrel unit powered on and in the cradle which should be connected to the PC.
Note: if using a Bluetooth module in the cradle, please turn Bluetooth OFF on the Kestrel.
- Select the correct COM port number (see Troubleshooting) and click start download. It will take about 10 to 15 minutes to update the Kestrel Software. You should see “REFLASH” on the Kestrel unit while updating the code.



Using the NK Bootloader Application (continued)

- Once the progress bar completes, you should see Download Successful.
- **Please wait until the Kestrel reboots** itself before disconnecting or closing the program to ensure firmware update complete.
- You can now use your Kestrel with the updated 4.93 software version.

Troubleshooting

- Additional information can be found [here](#)
- Please ensure that your PC has Bluetooth capability, and your unit is paired and PIN entered (If using Bluetooth).
- Please ensure that you are selecting the correct COM port number.
 - (For PC Cradle) This can be found through Control Panel->Devices and Printers.
 - (For Bluetooth) This can be found in Bluetooth->Open Settings->COM Ports.
- If using the PC Interface Cradle, please ensure you have the correct driver (additional help can be found [here](#)).
- If the update is interrupted, and your Kestrel stays on REFLASH:
 - Pop the batteries and reinsert.
 - **Display will not come back on but unit can still be updated.**
 - Connect in the exact same manner as before and rerun the update steps with the display off.
 - Unit should reboot after the update finishes with the latest firmware.
- Further help can be obtained by emailing techsupport@nkhome.com or calling 1-800-784-4221